



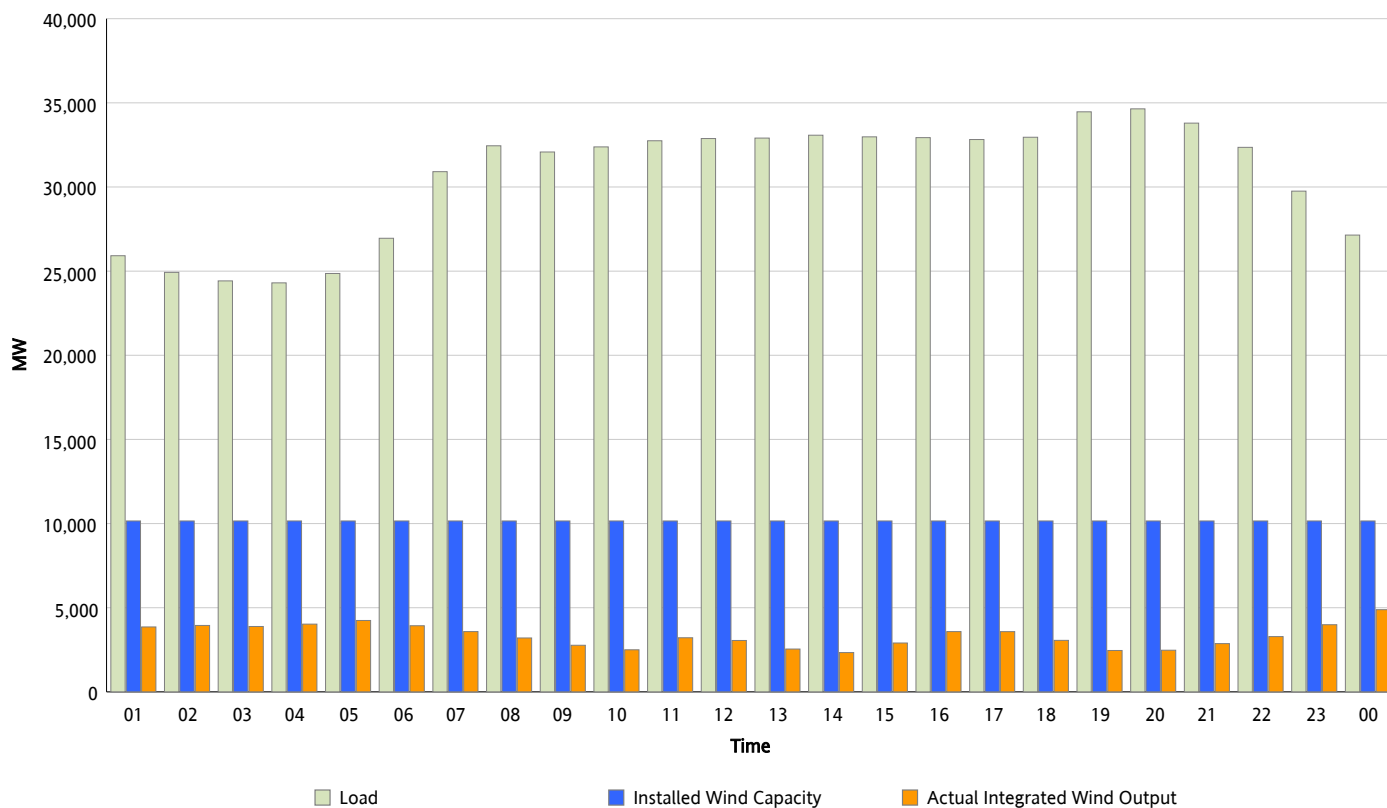
ERCOT Grid Operations

Wind Integration Report : 02/06/2013

Peak Load	34,641 MW
Load Peak Hour (HE)	20
Wind Over Peak	2,475 MW
Wind Record 01/29/13	8,667 MW
Max Wind Value*	5,345 MW
Wind Peak Time	00:00
Wind Integration %	20.42 %

Hourly Average Actual Load vs. Actual Wind Output

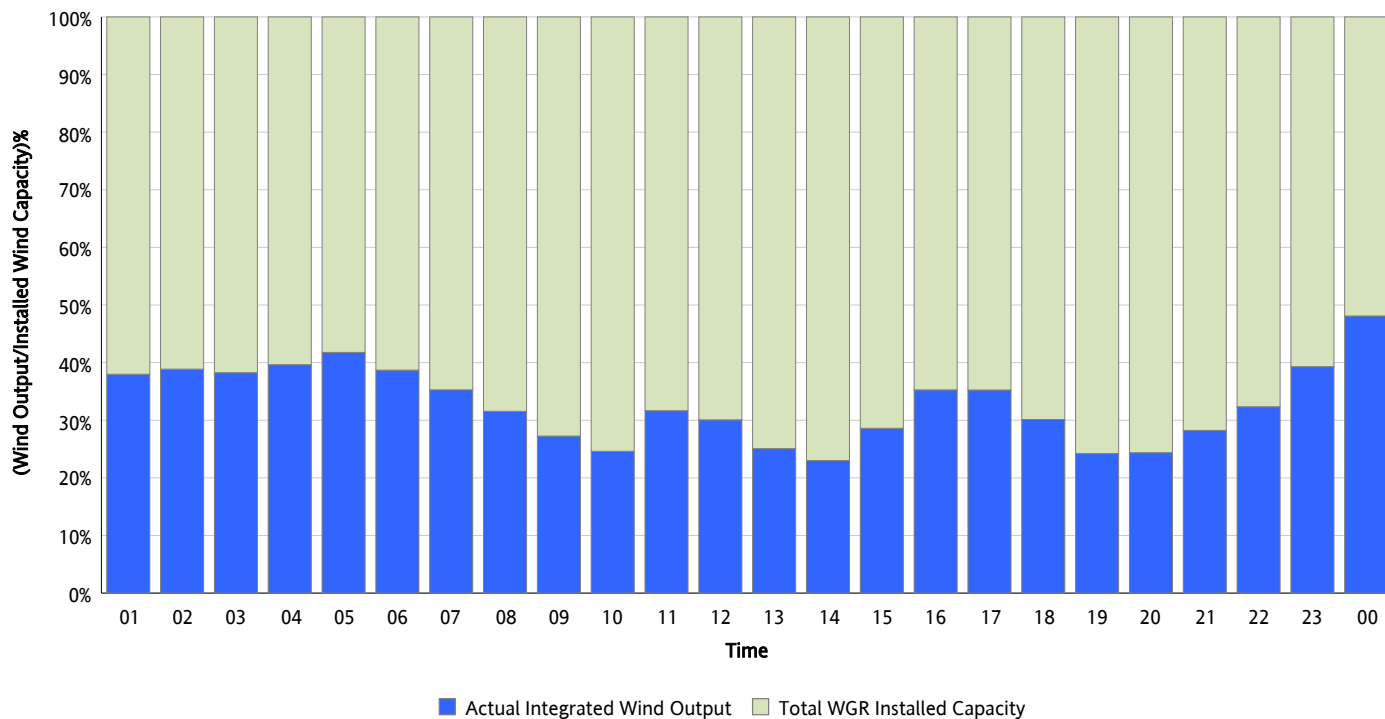
02/06/2013



* Wind Record and Wind Max represent instantaneous values and the rest of the values are integrated over the hour

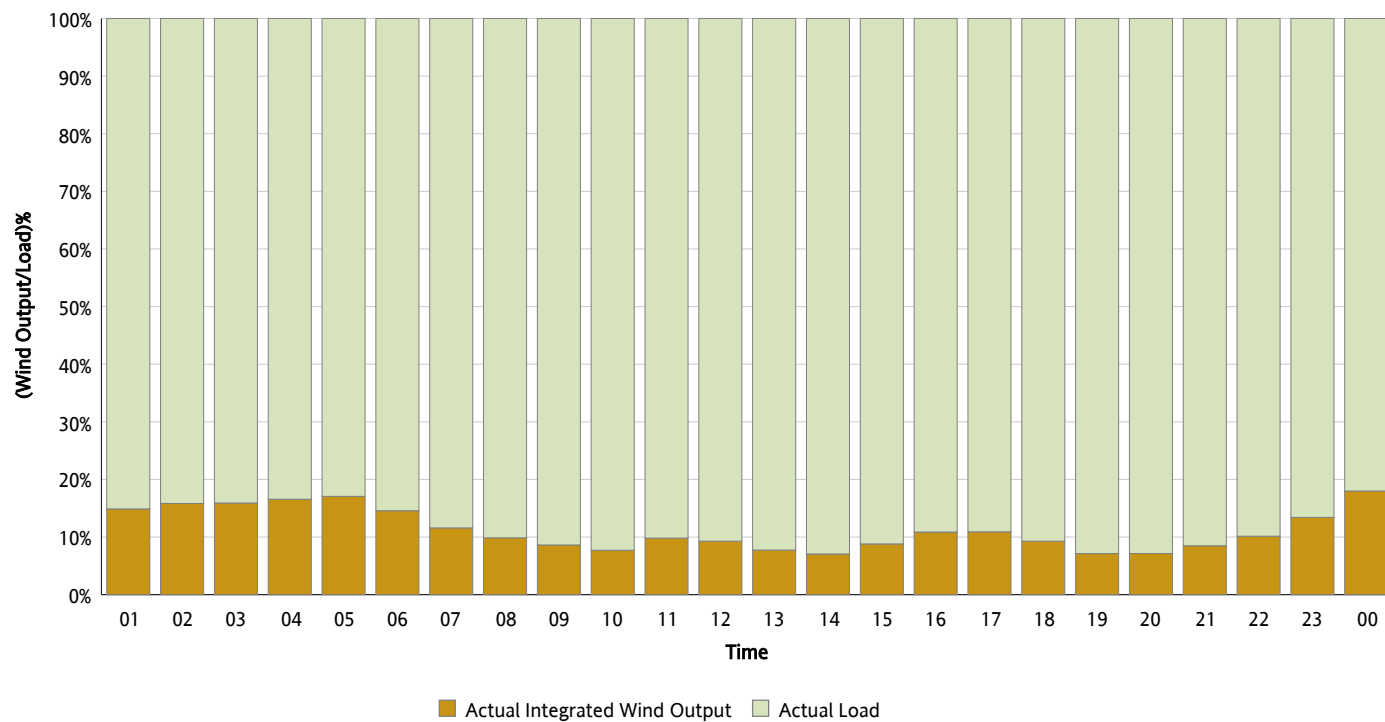
Actual Wind Output as a Percentage of the Total Installed Wind Capacity

02/06/2013



Actual Wind Output as a Percentage of the ERCOT Load

02/06/2013



ERCOT Load vs. Actual Wind Output

01/30/2013 - 02/06/2013

